

THE 'JCH' BOUNDARY STONES

BOUNDARY STONES OF 'JCH'



BOUNDARY STONE

'JCH'

'John Capel Hanbury' (1853-1921)

INSCRIPTION and NOTES

Across the 'Twmbarlwm' hill range, **THREE (3) different yet similar 'SETS'** of inscribed boundary stones can be found. On one side of ALL of the three (3) 'sets' of boundary stones can be found the inscribed initialled letters 'JCH' with a Roman numeral; whilst on the opposite sides the inscribed initialled letters of either 'RTR', 'E' or 'MP' can be found.

Research has indicated that the inscribed 'letters relate to the following:

'JCH' - 'JOHN CAPEL HANBURY' of the 'Hanbury' family

'RTR' – 'RICHARD THOMAS ROBERTS'

'E' – 'EDLOGAN'

'MP' – 'MAGNA PORTA'

The following boundary stones have already been found in relationship to the **THREE (3) 'SETS'**:

'JCH' + 'RTR'	BS's	2, 3, 5 & 7	4
'JCH' + 'E'	BS's	1, 2, 5, 6, 7, 8, 9, 10, 11, 14 & 15	11
'JCH' + 'MP'	BS's	1, 4, 5, 9, 10, 11 & 12	7

LOCATION OF BOUNDARY STONES

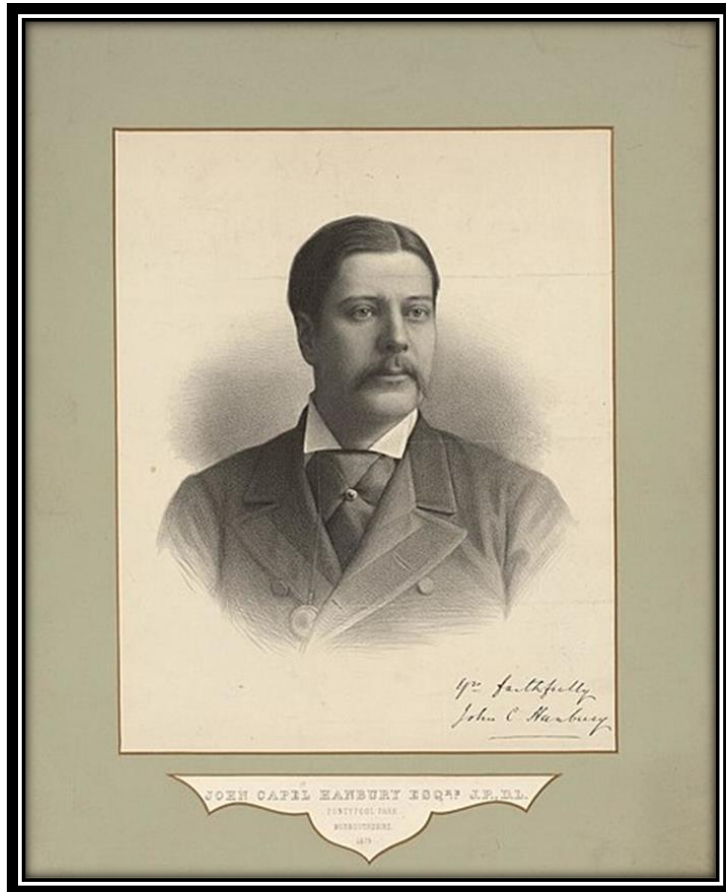
'JCH' + 'RTR' BOUNDARY STONES	
GRID REFERENCE	FURTHER NOTES
ST 27526 97825	JCH II (2) + 'RTR' JOHN CAPEL HANBURY + RICHARD THOMAS ROBERTS
ST 27542 97910	JCH III (3) + 'RTR' JOHN CAPEL HANBURY + RICHARD THOMAS ROBERTS
ST 27591 97950	JCH V (5) + 'RTR' JOHN CAPEL HANBURY + RICHARD THOMAS ROBERTS
ST 27551 97760	JCH VII (7) + 'RTR' JOHN CAPEL HANBURY + RICHARD THOMAS ROBERTS

'JCH' + 'E' BOUNDARY STONES	
GRID REFERENCE	FURTHER NOTES
ST 26284 96910	JCH I (1) + E + E TRIANGULAR STONE - JOHN CAPEL HANBURY + EDLOGAN MANOR
ST 26398 96915	JCH II (2) + E JOHN CAPEL HANBURY + EDLOGAN MANOR
ST 26287 96947	JCH V (5) + E + E TRIANGULAR STONE - JOHN CAPEL HANBURY + EDLOGAN MANOR
ST 26262 97037	JCH VI (6) + E + BM JOHN CAPEL HANBURY + EDLOGAN MANOR + BENCH MARK
ST 26230 97085	JCH XI (7) + E + E TRIANGULAR STONE - JOHN CAPEL HANBURY + EDLOGAN MANOR
ST 26262 97110	JCH VIII (8) + E JOHN CAPEL HANBURY + EDLOGAN MANOR
ST 26300 97136	JCH IX (9) + E JOHN CAPEL HANBURY + EDLOGAN MANOR
ST 26359 97163	JCH X (10) + E JOHN CAPEL HANBURY + EDLOGAN MANOR
ST 26434 97216	JCH XI (11) + E JOHN CAPEL HANBURY + EDLOGAN MANOR
ST 26280 97332	JCH XIV (14) + E JOHN CAPEL HANBURY + EDLOGAN MANOR IN STREAM BED
ST 26262 97175	JCH XV (15) + E + E TRIANGULAR STONE - JOHN CAPEL HANBURY + EDLOGAN MANOR

'JCH' + 'MP' BOUNDARY STONES	
GRID REFERENCE	FURTHER NOTES
ST 26672 96627	JCH I (1) + MP JOHN CAPEL HANBURY + MAGNA PORTA
ST 26644 96775	JCH IV (4) + MP JOHN CAPEL HANBURY + MAGNA PORTA

ST 26613 96788	JCH + JCH + MP V (5) TRANGLE STONE - JOHN CAPEL HANBURY ON TWO (2) SIDES + MAGNA PORTA V (5) ON THE THIRD SIDE
ST 26529 96783	JCH IX (9) + MP JOHN CAPEL HANBURY + MAGNA PORTA
ST 26480 96776	JCH X (10) + MP JOHN CAPEL HANBURY + MAGNA PORTA
ST 26410 96777	JCH XI (11) + MP JOHN CAPEL HANBURY + MAGNA PORTA
ST 26352 96784	JCH XII (12) + MP JOHN CAPEL HANBURY + MAGNA PORTA

THE 'JCH' BOUNDARY STONE



JOHN CAPEL HANBURY 1853-1921

John Capel Hanbury (1853-1921)

John Capel Hanbury (1853-1921) was the only son of Capel Hanbury Leigh (1776-1861) and Emma Elizabeth Rous (1816-1888). John Capel Hanbury (1853-1921) ceased to use the families additional name of 'Leigh' in 1864, however, he continued to use both family crests.

Although, John Capel Hanbury (1853-1921), spent a lot of time away from Pontypool he was its last squire.

In 1885, John Capel Hanbury (1853-1921) married Louisa Charlotte Tasmania Eager (1866-1927); as a means of celebration, the residents of Pontypool lit a huge bonfire and set-off fireworks in Pontypool Park.

They had a son, Capel Lionel Charles Hanbury, but he died the age of 16 from appendicitis.

In 1912 John Capel Hanbury (1853-1921) decided to lease 'Park House' to a Roman Catholic Order and it remains as a RC school today.

In 1913 the District Councils decided to ask John Capel Hanbury (1853–1921) if a section of the Park estate could be set aside for public enjoyment; he agreed and in 1920 the whole 158 acres of ‘Pontypool Park’ was transferred to the ownership of the District Councils.

When John Capel Hanbury (1853-1921) died in 1921 aged 68, the Park estate was left to his wife Louisa C T Eager (1866–1927). Then when Louisa C T Eager (1866–1927) died in 1927, the Park estate was left to Ruth Julia Margaretten Tenison, the daughter, The Rt Hon. William Charles Frederick Baron Sudeley, and Margaret Ruth Leslie, the niece.

THE LIFE OF ‘JOHN CAPEL HANBURY (b.1853 – d.1921)’

JOHN CAPEL HANBURY (b.1853 – d.1921)	
JOHN CAPEL HANBURY (1853–1921) – MARRIED – Louisa Charlotte Tasmania Eager (1866–1927)	
YEAR	INFORMATION
1853 BIRTH	John Capel Hanbury was born in on the 14 th May 1853 to parents Capel Hanbury (1776-1861) and Emma Elizabeth Rous (1816–1888). The family lived in Trevethin, Monmouthshire, Wales.
1853 Baptism	John Capel Hanbury was baptised on the 25 th May 1853 in Trevethin, Monmouthshire, Wales.
1861 Census	John (Aged 7) was living with his Father, Mother and two Sisters Emma and Francis in ‘Pontypool Park Mansion’, Trevethin, Monmouthshire, Wales.
1871 Census	John (Aged 18) was a Boarder / Scholar living at ‘Manor House’ in Liddiard Millicent, Wootton Bassett, England.
1881 Census	Not found as yet.
1885 Marriage	Capel Hanbury Esquire (Aged 21) married Louisa Charlotte Tasmania Eager (1766–1927) (Aged 29) on 8th January 1885. The marriage took place at St Michael, Chester Square, London, Westminster, England
1891 Census	John (Aged 37) was the ‘Head’ of the household and was living with Wife, Louisa Hanbury (1866-1927) (Aged 25), in St George Hanover Square, Mayfair, London, England.
1901 Census	John (Aged 47) was the ‘Head’ of the household and was living with Wife, Louisa (Aged 34) and Son Capel (7) in 1 Great Stanhope Street, St George Hanover Square, Mayfair, London, England.
1911 Census	John (Aged 57) was the ‘Head’ of the household and was living with Wife, Louisa (Aged 45) and Daughter Ruth (8) in 3 Great Stanhope Street, St George Hanover Square, Mayfair, London, England.
1921 DEATH	John (Aged 68) died on the 8 May 1921 at Danesfield Court, Seven Oaks, Kent, England.
1921 Probate	<u>Grant of Probate:</u> John Capel of Danesfield Court, Seven Oaks, KENT, Pontypool Monmouth and 3 Great Stanhope Street, Park-lane, MIDDLESEX died 8 May 1921 at Danesfield Court. Probate London 19 July to Louisa Tasmania Hanbury widow. Effects £272692 18s 1d.
1921 Census	Yet to be discovered. The 1921 Census was taken on the night of Sunday 19 June 1921
1861 DEATH	Louisa (Aged 61) died on the 31 May 1927 at Gordonstoun, Elgin, Scotland.
1861 Probate	<u>Grant of Probate:</u> Louisa Charlotte Tasmania Eager, Gordonstoun, Elgin, died 31 May 1927 at same place, testate. Probate of the Will and codicil granted London, 17 August 1927 to Ruth Julia Margaretten Tenison, the daughter, The Rt Hon. William Charles Frederick Baron Sudeley, and Margaret Ruth Leslie, the niece, the executors. Certified at Edinburgh 26 August. Value of Estate, £157,982:10:1.

THE FAMILY LINKS OF 'JOHN CAPEL HANBURY (b.1853 – d.1921)

FAMILY 'CAPEL HANBURY LEIGH'			
FAMILY LINK	JOHN CAPEL HANBURY (1853-1921)	MARRIED	Louisa Charlotte Tasmania Eager (1866–1927)
PARENTS	CAPEL HANBURY LEIGH (1776-1861)	MARRIED	Molly Ann Miers Mackworth (1768–1846) and Emma Elizabeth Rous (1816–1888)
GRAND PARENTS	JOHN HANBURY (1744-1784)	MARRIED	Jane Rachel Lewis (1751-1836)
GREAT GRAND PARENTS	CAPEL HANBURY (1707-1765)	MARRIED	Jane Tracy (1716-1787)
GREAT, GREAT GRAND PARENTS	MAJOR JOHN HANBURY (1664-1734)	MARRIED	Bridget Ayscough (1672-1741)

SOURCE OF INFORMATION:	
Wikipedia	Website: wikipedia.org
Pontypool Museum Trust	Website: torfaenmuseum.org.uk
Phil Jenkins - Industrial Gwent	Website: industrialgwent.co.uk
Robert Southall	Face Book Page: The Lost Farmsteads of Twmbarlwm & Mynydd Maen
Ancestry Genealogy	Website: ancestry.co.uk